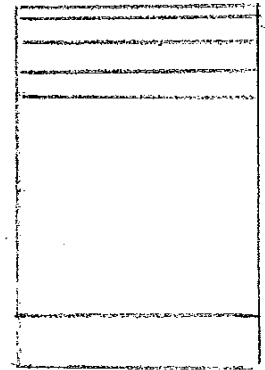
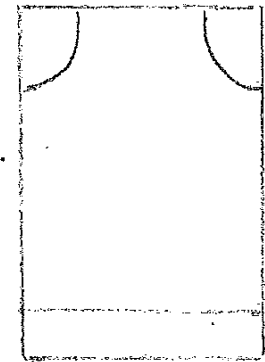


PILLOW CASE SUN DRESSES

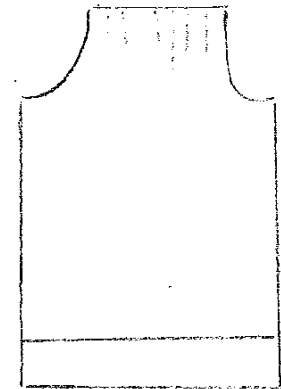
1. Lay pillow case flat, then cut off seam from top.
2. Cut 3 - 2" strips off top of pillow case.



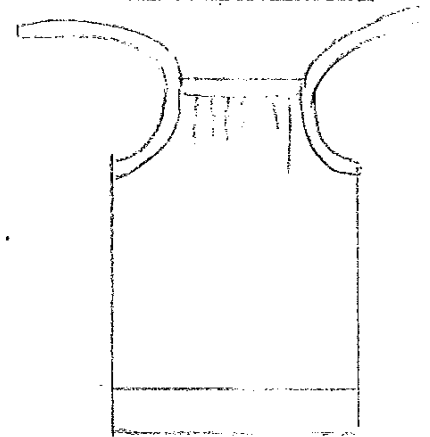
3. Fold pillow case in half and cut arm holes.
Standard size pillow slip: 4" down and 2" in from sides.
Queen or king sized pillow slip: 5" down and 2 1/2" in from sides.



4. Pleat both front and back panels to approximately 7"
(Front and back panels can also be gathered.)



5. Use one 2" strip to bind off front and back panels.
6. Bind off arm holes using other 2" strips, extending ends to be used for ties. Strips should be approx. 40".



PILLOW CASE SUN DRESSES

YOU WILL NEED:

A general knowledge of sewing.

Sewing machine

Pillow case (preferably permanent press) & matching thread (pillow cases can be gotten at Ollie's & some dollar stores at a reasonable price & also at garage sales)

Matching color of single bias tape---1 pack (enough for several dresses)

If pillow case is a plain color you may prefer to add some rick-rack or other appropriate trim.

Two yards of matching ribbon preferably about 5/8".

HELPFUL HINTS:

If you buy queen or king-size pillow cases you can usually get two smaller sized sun dresses from one pillow case.

A regular size pillow case makes a nice larger size sun dress for girls sizes 7 and up.

You can also begin with a piece of material that is 36" - 40" long. Fold it in half, right sides together and stitch up on side. Then hem the bottom and begin at Step 3.

DIRECTIONS:

1. Cut off any tags from inside seams.
2. Cut off top (seamed end) of pillowcase leaving the hemmed end as is.
3. Re-fold the pillowcase so that seam is in the middle (which will be back of sun dress).

4. Measuring from bottom of material decide from these measurements what size sun dress you want to make. Use these measurements:

6 months	--	14 1/4"	3 T	--	19 1/4"
12 months	--	16 1/4"	4 T	--	20 1/4"
18 months	--	17 1/4"	5 T	--	21 1/4"
2 T	--	18 1/4"	6 T	--	22 1/4"

Size 7 and up -- 24" or more according to how long you want it

5. Making the armhole: Fold pillowcase in half and cut both armholes at same time so that they are exactly the same.

For sizes 2T and below cut 1 1/2" in and 3" down.

For sizes 3T and 4 T cut 2" in and 4" down.

For sizes 5T and 6T cut 2 1/2" in and 4 1/2" down.

For sizes 7 and up cut 2 1/2" in and 5" down.

6. Using the single fold bias tape pin right side of bias tape to right side of pillow case. Machine sew. Then finish the arm hole by turning the bias tape and pinning to wrong side of pillow case. Machine sew. You should end up with a nice and neatly sewed armhole.

7. Casing: For the top of the front fold material down 1/4" to 1/2" and then about 5/8" and machine sew to form casing. Do the same for top of the back. Attach 1 yard of ribbon to large safety pin and work ribbon through front of casing. Repeat procedure for the back casing.

8. Finishing sun dress: Keeping both ends of ribbon even pin ribbon in place at center of casing and machine stitch back and forth through ribbon so that ribbon does not pull out. Knot ribbon at each end.

9. If you have any questions please call Marilyn Sherick at 581-9325 or Fay Deibert at 872-7132.

You now have a completed pillow case sun dress for a needy child!